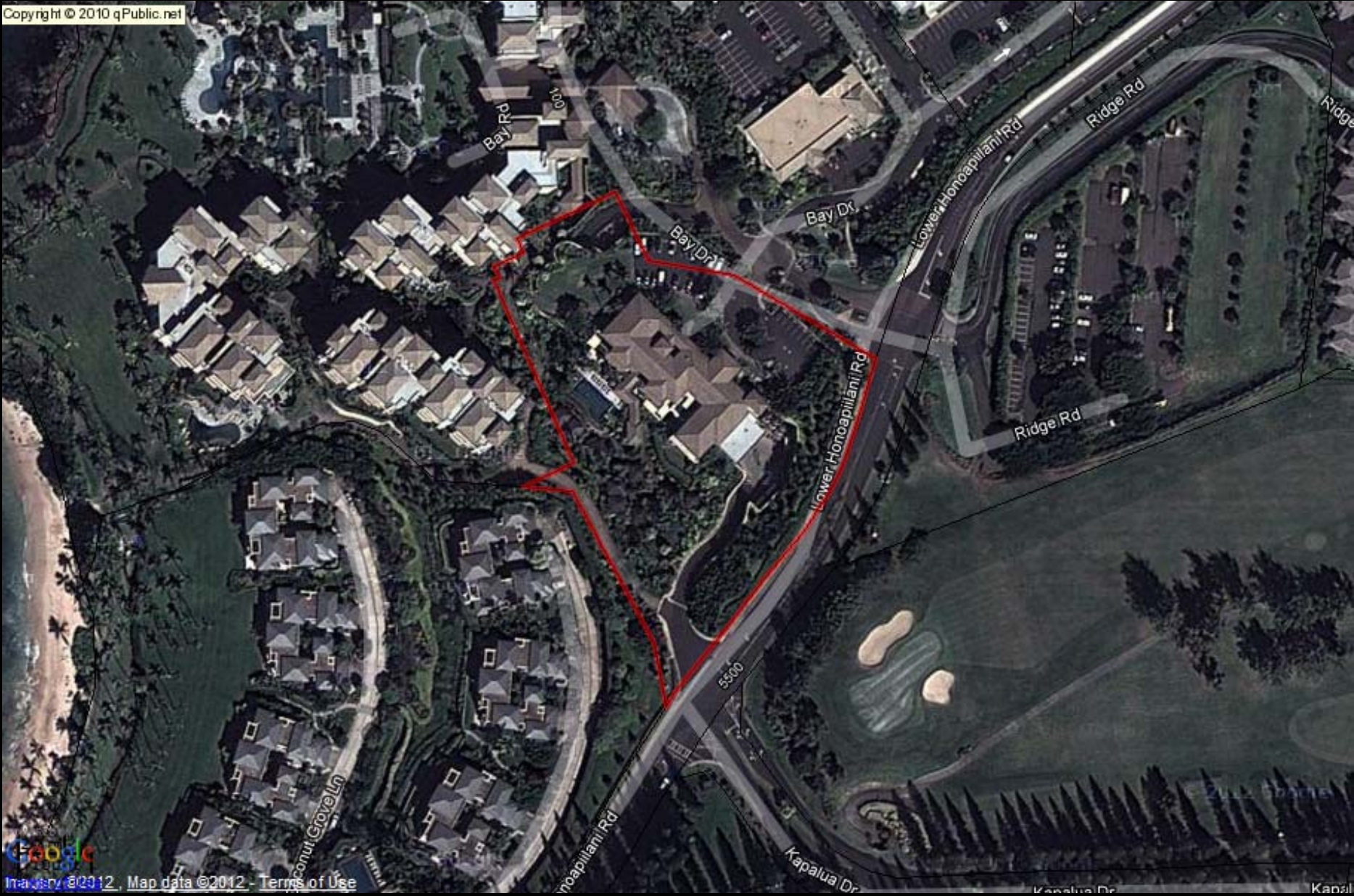


KAPALUA BAY
1 Bay Drive, Lahaina, Hawaii 96761
TMK: (2) 4-2-004-028



KAPALUA BAY
129 Bay Drive, Lahaina, Hawaii 96761
TMK: (2) 4-2-004-027

Copyright © 2010 qPublic.net



KAPALUA BAY
1 Bay Drive, Lahaina, Hawaii 96761
TMK: (2) 4-2-004-028

Controls

Copyright © 2010 qPublic.net


Show layers:

- Parcels
- Yearly Sales
- Parcel Numbers
- Roads
- Streets (Google)
- Satellite (Google)
- Hybrid (Google)
- Physical (Google)



1:6,771

lat:20°59'53" lon:-156°39'27"

POWERED BY

 Imagery ©2012, Map data ©2012 - Terms of Use



Reports

Parcel

View as: [Google Earth](#) | [Bird's Eye](#) [Google Maps & Street View](#)

Parcel Information

Selected Parcel	420040280000 (Click for Complete Card)
Land Size	20.666 Acres
Name	KAPALUA BAY CONDOMINIUM - CONDO MASTER
Mailing Address	C/O MARRIOTT VACATION CLUB INTERNATIONAL JAMES CAMPBELL BLDG/1001 KAMOKILA BLVD # KAPOLEI HI 96707
Situs/Physical Address	1 BAY DR
Assd Land Value	\$27,707,800.0
Assd Building Value	\$115,945,800.
Total Assd Value	\$143,653,600.
Exempt Value	\$0.00
Taxable Value	\$143,653,600.

Recent Sale Information

Date	Price	Vac/Imp	Qual

Legend +

Measure +


The Maui County Tax Assessor's Office makes every effort to produce the most accurate information possible. No warranties, expressed or implied, are provided for the data herein, its use or interpretation. The assessment information is from the last certified taxroll. All data is subject to change before the next certified taxroll.

KAPALUA BAY
129 Bay Drive, Lahaina, Hawaii 96761
TMK: (2) 4-2-004-027


Controls <<

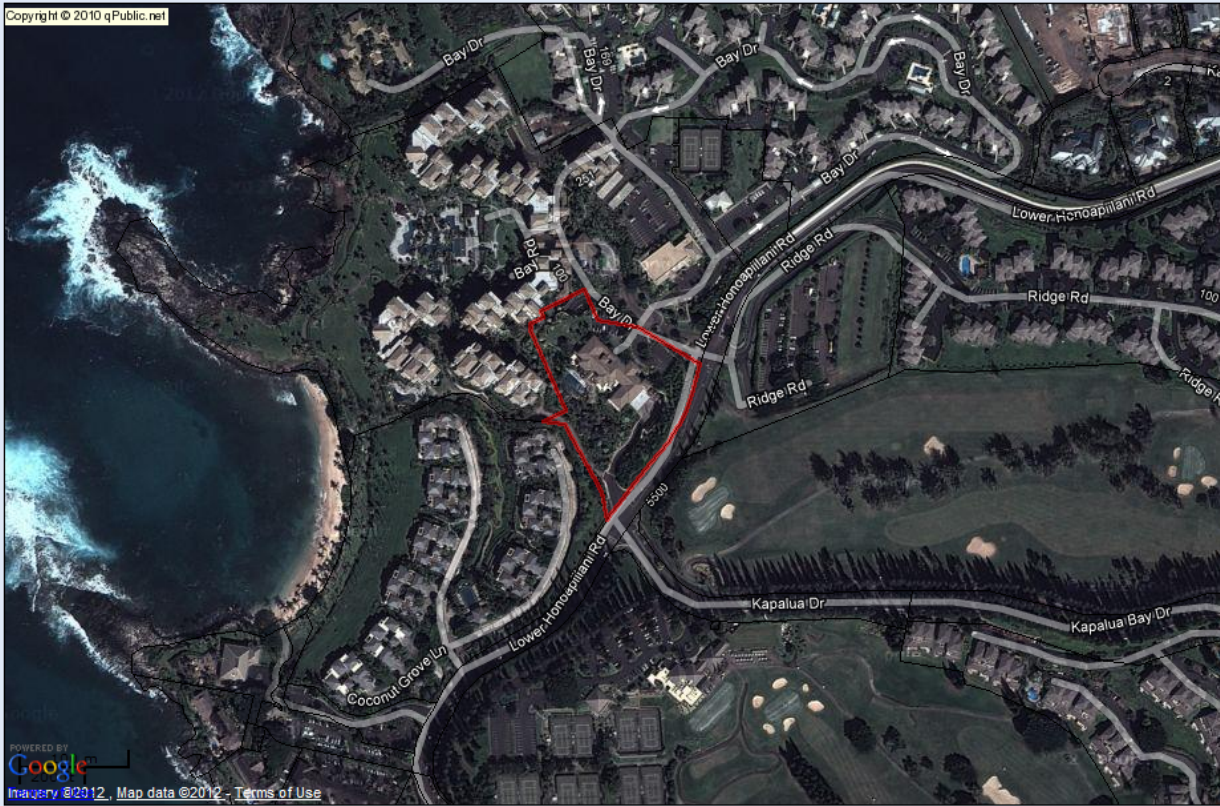
Show layers:

- Parcels
- Yearly Sales
- Parcel Numbers
- Roads
- Streets (Google)
- Satellite (Google)
- Hybrid (Google)
- Physical (Google)



1:3,386

POWERED BY

 Imagery ©2012, Map data ©2012 - Terms of Use



Reports >>

Parcel

View as: [Google Earth](#) | [Bird's Eye](#) [Google Maps](#) & [Street View](#)

Parcel Information

Selected Parcel	420040270000 <small>(Click for Complete Card)</small>
Land Size	3.486 Acres
Name	MAUI LAND & PINEAPPLE CO
Mailing Address	C/O MARRIOTT VACATION CLUB INT/JAMES CAM 1001 KAMOKILA BLVD, STE 202 KAOPELI HI 96707
Situs/Physical Address	129 BAY DR
Assd Land Value	\$1,811,900.00
Assd Building Value	\$6,757,300.00
Total Assd Value	\$8,569,200.00
Exempt Value	\$0.00
Taxable Value	\$8,569,200.00

Recent Sale Information

Date	Price	Vac/Imp	Qual
02-1995	\$7,000,000		

Legend +

Measure +

The Maui County Tax Assessor's Office makes every effort to produce the most accurate information possible. No warranties, expressed or implied, are provided for the data herein, its use or interpretation. The assessment information is from the last certified taxroll. All data is subject to change before the next certified taxroll.